

Sound insulated doors



Standard program overview

Sound-insulated steel doors



Sound-insulated single and double-leaf steel doors

Product	Dimensions width/height in mm (modular dimension)	Leaf thickness, sheet thickness	* Tested as a sound insulated door in accordance with EN 20140-717-1	Frames				Page
				Corner frame	Counter frame	Closed frame	Block frame	
Fire-resistant Sound-insulation door T90-1-FSA „Teckentrup OS-72“	W 625 - 1350 H 1750 - 2500	72 mm 1,0 mm or 1,5 mm	Up to 1350 x 2500 mm 52 dB	•	•	•	-	83-84
Sound-insulation door dw 67-1/S „Teckentrup“	W 750 - 1500 H 1750 - 3000	67 mm	Up to 1500 x 3000 mm 53 dB	•	•	•	•	85-86
Sound-insulation door dw 67-1/HS „Teckentrup“	W 750 - 1500 H 1750 - 3000	67 mm	Up to 1500 x 3000 mm 57 dB	•	•	•	•	87-88
Sound-insulation door dw 67-2/HS „Teckentrup“	W 1500 - 3000 H 1750 - 3000	67 mm	Up to 3000 x 3000 mm 55 dB	•	•	•	•	89-90

* The specified insulation values are laboratory values. Laboratory value -5 dB applies for the achievable insulation value at the installation site.

Standard program overview

Sound-insulated steel doors

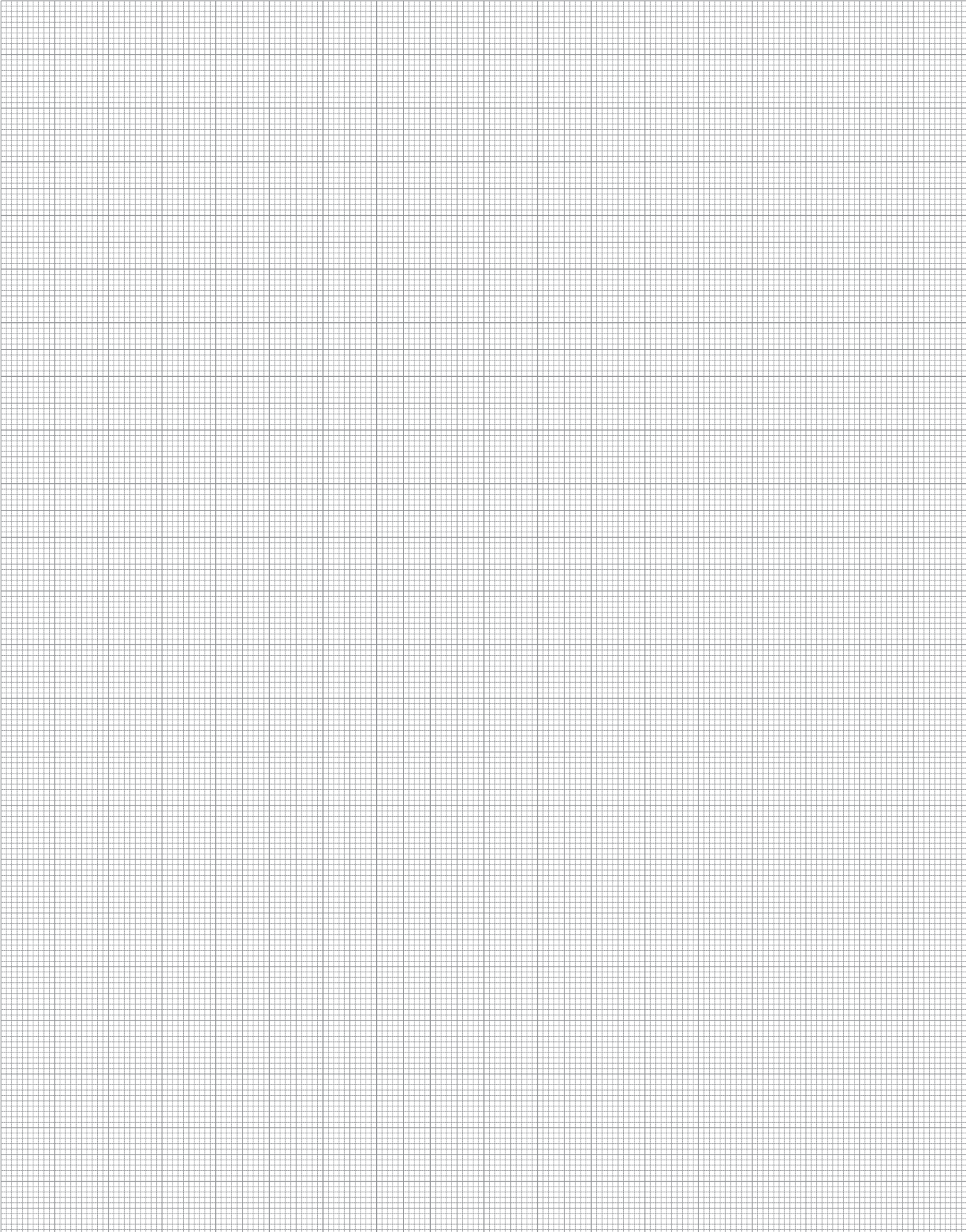
Special versions

Product	Dimensions		Leaf thickness, sheet thickness	* Tested as a sound insulated door in accordance with	Frames				Page
	width/height in mm (modular dimension)				Corner frame	Counter frame	Closed frame	Block frame	
Fire-resistant T30-1-FSA „Teckentrup HT 8-D“	W 625 - 1125 H 1750 - 2125		42 mm, 0.9 mm	EN 20140-717-1 to 1125 x 2125 mm SD: 37 dB* AD: 39 dB*	•	•	•	•	35-36
Fire-resistant T30-1-FSA „Teckentrup 42“	W 625 - 1125 H 1750 - 2250		42 mm, 1.0 mm	to 1125 x 2250 mm SD: 37 dB* BD: 37 dB* AD: 37 dB*	•	•	•	•	37-38
Fire-resistant T30-1-FSA „Teckentrup DF“	W 625 - 1350 H 1750 - 3000		52 mm or 62 mm, 1.0 mm / 1.5 mm	to 1350 x 3000 mm BD: 38 dB* AD: 42 dB*	•	•	•	•	39-40
Fire-resistant T30-1-FSA „Teckentrup 62“	W 500 - 1500 H 1750 - 4000		62 mm 0.75 mm / 1.0 mm / 1.5 mm	to 1350 x 2500 mm SD: 35 dB* BD: 37 dB* AD: 37 dB*	•	•	•	•	41-42
Fire-resistant T30-1-FSA „Teckentrup 62 ST“	W 625 - 1250 H 1750 - 2500		62 mm, ≥ 0.75 mm	to 1250 x 2500 mm SD: 34 dB* BD: 35 dB* AD: 35 dB*	•	•	•	•	43-44
Highly Flame-resistant T60-1-FSA „Teckentrup 62“	W 625 - 1250 H 1750 - 2500		62 mm, 0.75 mm / 1.0 mm	to 1250 x 2500 mm BD: 33 dB* AD: 33 dB*	•	•	•	•	53-54
Fire-resistant T30-2-FSA „Teckentrup 42“	W 1375 - 2250 H 1750 - 2250		42 mm, 1.0 mm	to 2250 x 2250 SD: 35 dB* BD: 35 dB* AD: 37 dB*	•	•	•	•	45-46
Fire-resistant T30-2-FSA „Teckentrup DF“	W 1375 - 3000 H 1750 - 3000		52 mm / 62 mm, 1.0 mm / 1.5 mm	to 3000 x 3000 mm BD: 37 / 38 dB* AD: 40 / 42 dB*	•	•	•	•	47-48
Fire-resistant T30-2-FSA „Teckentrup 62“	W 1375 - 3000 H 1750 - 4000		62 mm, 0.75 mm / 1.0 mm / 1.5 mm	to 3000 x 4000 SD: 37 dB* BD: 38 dB* AD: 38 dB*	•	•	•	•	49-50
Fire-resistant T30-2-FSA „Teckentrup 62 ST“	W 1375 - 2500 H 1750 - 2500		62 mm, ≥ 0.75 mm	to 2500 x 2500 SD: 36 dB* BD: 36 dB* AD: 36 dB*	•	•	•	•	51-52
Highly Flame-resistant T60-2-FSA „Teckentrup 62“	W 1375 - 2500 H 1750 - 2500		62 mm, 0.75 mm / 1.0 mm	to 2500 x 2500 mm BD: 33 dB* AD: 33 dB*	•	•	•	•	55-56
Fire-resistant T90-1-FSA „Teckentrup DF“	W 625 - 1350 H 1750 - 3000		62 mm, 1.0 mm / 1.5 mm	to 1350 x 3000 mm BD: 41 dB* AD: 44 dB*	•			•	61-62
Fire-resistant T90-2-FSA „Teckentrup SV“	1,0 mm to 3000 - 3000 1,5 mm to 2500 - 2500		62 mm, 1.0 mm / 1.5 mm	to 3000 x 3000 mm BD: 35 dB* AD: 41 dB*	•			•	63-64
Fire-resistant T90-2-FSA „Teckentrup DF“	W 1375 - 3000 H 1750 - 3000		62 mm, 1.0 mm / 1.5 mm	to 3000 x 3000 mm BD: 36 dB* AD: 40 dB*	•			•	65-66
Steel door MZD-HT 8 „Teckentrup“	W 750 - 1125 H 2000 - 2125		42 mm, 0.9 mm	to 1125 x 2125 mm SD: 37 dB* AD: 39 dB*	•			•	125- 126

* SD = Sliding threshold seal / BD = Retractable bottom seal / AD = Rabbet/Buffer seal

* The specified insulation values are laboratory values. Laboratory value -5 dB applies for the achievable insulation value at the installation site.

For your drawings and notes



Fire-resistant sound-insulated steel door

T 90-1-FSA „Teckentrup OS-72“



Rw = 52 dB

Text example

Compile and tender according to requirements.
Please refer to technical data below for respective details.
Updated 1st June 2015



Position	No. of pieces	Item	Unit price €	Total price €
		Fire-resistant sound-insulated door T 90-1-FSA tested in accordance with DIN 4102/ DIN EN 20140/717 Part 1. Single-leaf door element. Type of handing DIN right. Galvanized and prime coated door leaf similar to RAL 9002 (Grey white). 72 mm thick, rebated on 3-sides. Galvanized and prime coated corner frame similar to RAL 9002 (grey white). 2 mm thick, with 4-sided seal. Mortice lock with latch lever in accordance with DIN 18250, prepared for profile cylinder. Black plastic handle set. Handle pivoted on bearing, with tumbler insert (Bb) and 1 Bb key. 3 security bolts. 2 three-piece KO hinges with ball bearings. „Teckentrup OS“ (approval no. Z-6.20-1965) or equivalent.		

Technical data

Building authority approval:

Z-6.20-1965 tested in acc. with DIN 4102
Sound insulation tested in acc. with
DIN EN 20140. Evaluation in acc. with
DIN EN ISO 717 Part 1

Installation in:

- Masonry min. 175 mm
- Concrete min. 140 mm (only for internal walls)

Approved dimensions:

Width: 625 - 1350 mm
Height: 1750 - 2500 mm

Type of handing:

DIN right or DIN left

Door leaf:

Double-skinned, **thin rebated** on 3 sides
Door leaf thickness: 72 mm
Sheet thickness: 1.0 mm or 1.5 mm
Security bolts: 3
Reinforcement: U-shaped and flat steel
Insulation: Fire-resistant boards

Frame:

Corner frame 2.0 mm thick with bottom buffer strip and 4-sided seal. Version with buffer strip **not** approved for escape routes and emergency exits
3 wall anchor plugs on each side
Fire protection strips on 3 sides
Special equipment: Counter or closed frame

Surface:

Door leaf/Frame galvanized and prime coated, similar to RAL 9002 (grey white).

Hinges and closing devices:

- 2 three-piece KO hinges with top door closer

Fittings:

- Mortice lock with latch lever in acc. with DIN 18250, prepared for profile cylinder
- Black plastic handle set. Handle pivoted on bearing, with tumbler insert (Bb) and 1 Bb key.

Special equipment:

- Handle sets / Lever/Knob sets:
 - Plastic
 - Light metal
 - Stainless steel
 - With short plate or rose escutcheon (various makes)
- Prepared for rose escutcheon:
- Locks:
 - Profile cylinder 45.5 + 45.5 mm
 - Panic locks
 - Block lock (must be provided)
- Panic bar handle
- Top door closer DIN EN 1154
 - head assembly
 - with slide rail
 - with locking device
 - with smoke detector
- Bottom door closer DIN EN 1154
- Electric door opener
- Integrated lock inspector (bolt contact)
- Integrated opening indicator (Reed contact)
- Revolving door drives
- Hold-open devices

	Ordering dimensions/Module dimensions width x height	Clear opening dimensions (corner frame) width x height
Standard sizes (1.0/1.5 mm)	750 x 2000	666 x 1958
	2125	2083
	875 x 1875	791 x 1833
	2000	1958
	2125	2083
	1000 x 2000	916 x 1958
Special sizes: from 625 x 1750 to 1350 x 2500 mm	2125	2083
	1125 x 2000	1041 x 1958
	2125	2083
	1250 x 2000	1166 x 1958
	2125	2083
	2250	2208
	2500	2458

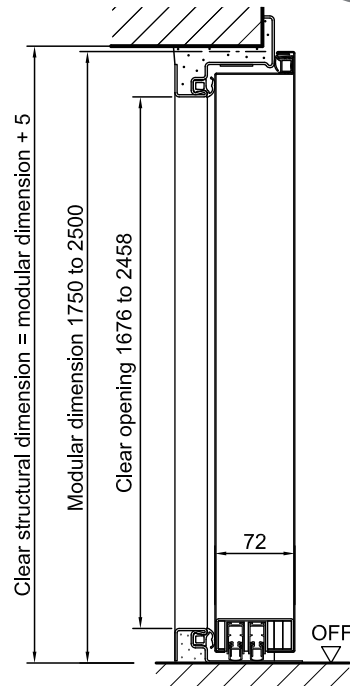
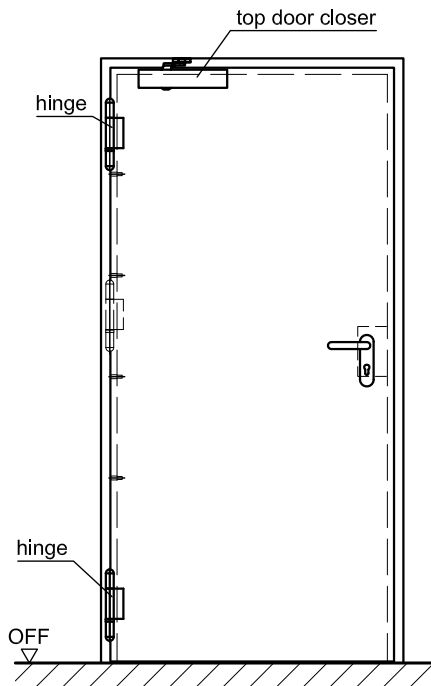
Further qualifications (special equipment):



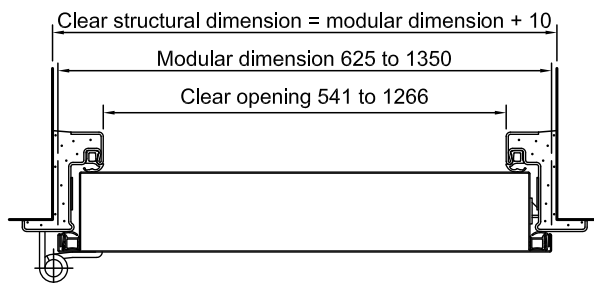
- **Smoke-proof** in acc. with DIN 18095 with top door closer for solid and lightweight construction stud walls

Fire-resistant sound-insulated steel door T 90-1-FSA „Teckentrup OS-72“

Rw = 52 dB



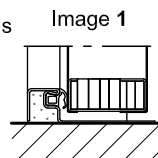
With bottom buffer and retractable bottom seals
(bottom buffer not approved for escape routes and emergency exits)



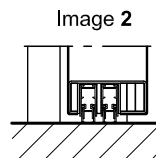
DIN left shown
DIN right laterally reversed

Floor connections:

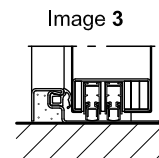
- Image 1: with bottom buffer
- Image 2: with retractable bottom seals
- Image 3: with bottom buffer and retractable bottom seals



Sound insulation Rw51



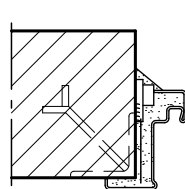
Sound insulation Rw46



Sound insulation Rw52

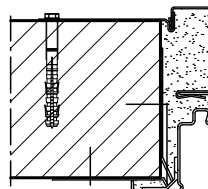
Installation in masonry/
concrete walls
concrete walls ≥ 140 mm
masonry walls ≥ 175 mm

Weld-on assembly



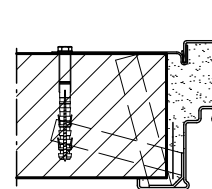
(Corner frame)

Wall plug assembly



(Corner frame with counter frame)

Wall anchor assembly



(Closed frame)

Sound-insulated steel door

dw 67-1/HS „Teckentrup“

up to $R_w = 57$ dB

dw 67-1/S „Teckentrup“

up to $R_w = 53$ dB



Text example

Compile and tender according to requirements.

Please refer to technical data below for respective details.

Updated 1st June 2015



Position	No. of pieces	Item	Unit price €	Total price €
		dw 67-1/S sound-insulated door tested in accordance with DIN EN 20140. Single-leaf door element. Type of handing DIN right. Door leaf/ Frame galvanized and prime coated similar to RAL 9002 (Grey white). 67 mm thick, rebated on 3-sides, thick rebate with rebate seal. 3-sided corner frame, 2 mm thick, with double sliding threshold seal (53 dB). Mortice lock with latch lever in acc. with DIN 18250, prepared for profile cylinder. FS round handle set, black (plastic). Handle pivoted on bearing with tumbler insert (Bb) and 1 Bb key. 2 three-piece KO hinges with ball bearings. „Teckentrup“ or equivalent.		

Technical data

Standard: Tested as per DIN EN 20140
Evaluation in acc. with DIN EN ISO 717-1

Installation

in:

- Masonry
- Concrete
- Autoclaved aerated concrete
- Lightweight stud wall
- Wooden frame construction

Sound insulation of the wall =
Sound insulation of the door + ≥ 10 dB

Dimensions:

(special sizes) Width: 750 - 1500 mm
Height: 1750 - 3000 mm

Type of

handing: DIN right or DIN left

Door leaf: Double-skinned, **thick rebated** on 3 sides and 3-sided rebate seal

dw 67-1/HS:

- with double retractable bottom seal
55 dB (Standard)
- with double sliding threshold seal and base profile
57 dB

dw 67-1/S:

- with double retractable bottom seal
50 dB (Standard)
- with double sliding threshold seal and base profile
53 dB

The specified values relate to a maximum MD-height of 2500 mm.
Approved for escape routes and emergency exits.

Door leaf thickness: 67 mm
Security bolt: 1
Reinforcement: flat steel

Frame: 3-sided corner frame, 2 mm thick with bottom buffer strip and 3-sided seal
3 wall anchor plugs on each side.
Special equipment:
Counter-, closed- or block frame

Surface: Door leaf/Frame galvanized and prime coated, similar to RAL 9002 (Grey white).

Hinges and

closing

devices: • 2 three-piece KO hinges with ball bearings

Fittings:

- Mortice lock with latch lever in acc. With DIN 18250, prepared for profile cylinder
- FS round handle set, black (plastic). Handle pivoted on bearing, with tumbler insert (Bb) and 1 Bb key

Special

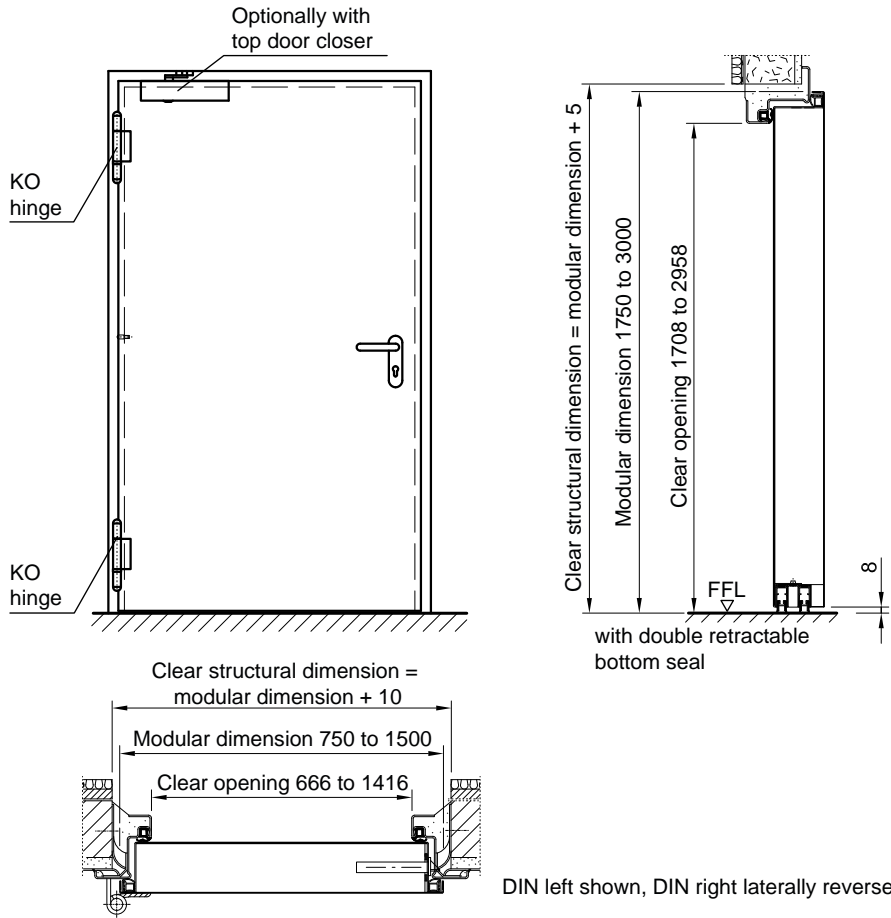
equipment:

- Handle sets / Lever/Knob sets:
 - plastic
 - light metal
 - stainless steel
 - with short plate or rose escutcheon (various makes)
- Locks:
 - Profile cylinder 50.5 + 35.5 mm
- Top door closer DIN EN 1154
- Panic locks
- Panic bar handle

Sound-insulated steel door

dw 67-1/HS „Teckentrup“ up to $R_w = 57$ dB

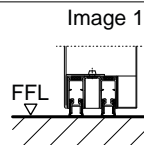
dw 67-1/S „Teckentrup“ up to $R_w = 53$ dB



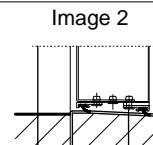
Floor connections:

Image 1: with double retractable bottom seal

Image 2: with double sliding threshold seal and base profile



dw 67-1/HS = 55 dB
dw 67-1/S = 50 dB

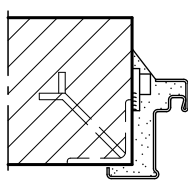


dw 67-1/HS = 57 dB
dw 67-1/S = 53 dB

Installation in masonry/ concrete walls

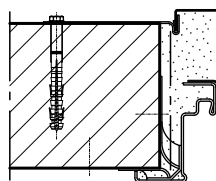
concrete walls
masonry walls

Weld-on assembly



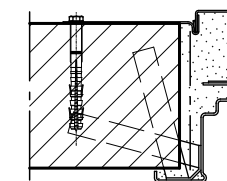
Corner frame

Wall plug assembly



Corner frame with counter frame

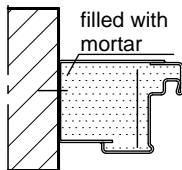
Wall anchor assembly



Installation with block frame

Flush installation between concrete walls, masonry walls

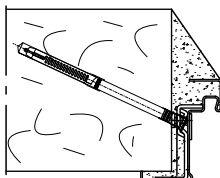
Standard



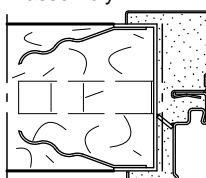
Block frame type 1.2

Installation in autoclaved aerated concrete walls

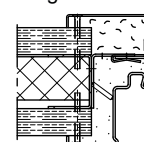
Wall plug assembly



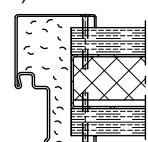
Wall anchor assembly



Installation in installation walls (lightweight construction stud walls)



Corner frame



Closed frame

Sound-insulated steel door

dw 67-2/HS „Teckentrup“ up to $R_w = 55$ dB



Text example

Compile and tender according to requirements.
Please refer to technical data below for respective details.
Updated 1st June 2015



Position	No. of pieces	Item	Unit price €	Total price €
		dw 67-2/HS sound-insulated door tested in accordance with DIN EN 20140. Double-leaf door element. Active door leaf DIN right. Door leaf/ Frame galvanized and prime coated similar to RAL 9002 (Grey white). 67 mm thick, rebated on 3-sides, thick rebate with rebate seal. 3-sided corner frame, 2 mm thick, with double sliding threshold seal (55 dB). Mortice lock with latch lever in acc. with DIN 18250, prepared for profile cylinder. FS round handle set, black (plastic). Handle pivoted on bearing with tumbler insert (Bb) and 1 Bb key. Inactive door leaf with concealed door edge bolt, 2 three-piece KO hinges with ball bearings on each side. "Teckentrup" or equivalent.		

Technical data

Standard: Tested as per DIN EN 20140
Evaluation in acc. with DIN EN ISO 717-1

Installation in:

- Masonry
- Concrete
- Autoclaved aerated concrete
- Lightweight stud wall
- Wooden frame construction

sound insulation of the wall =
sound insulation of the door + ≥ 10 dB

Dimensions: (special sizes)

Width: 1500 - 3000 mm
Height: 1750 - 3000 mm

Type of handing:

DIN right or DIN left

Door leaf:

Double-skinned, **thick rebated** on 3 sides and 3-sided rebate seal

dw 67-2/HS:

- with double retractable bottom seal **55 dB**

The specified values relate to a maximum MD-height of 2500 mm.
Approved for escape routes and emergency exits.

Door leaf thickness: 67 mm
Security bolt per leaf: 1
Reinforcement: flat steel

Frame:

3-sided corner frame, 2 mm thick with bottom buffer strip and 3-sided seal
3 wall anchor plugs on each side.
Special equipment:
Counter-, closed-, or block frame

Surface:

Door leaf/Frame galvanized and prime coated, similar to RAL 9002 (Grey white).

Hinges and closing devices:

- 2 three-piece KO hinges with ball bearings on each side

Fittings:

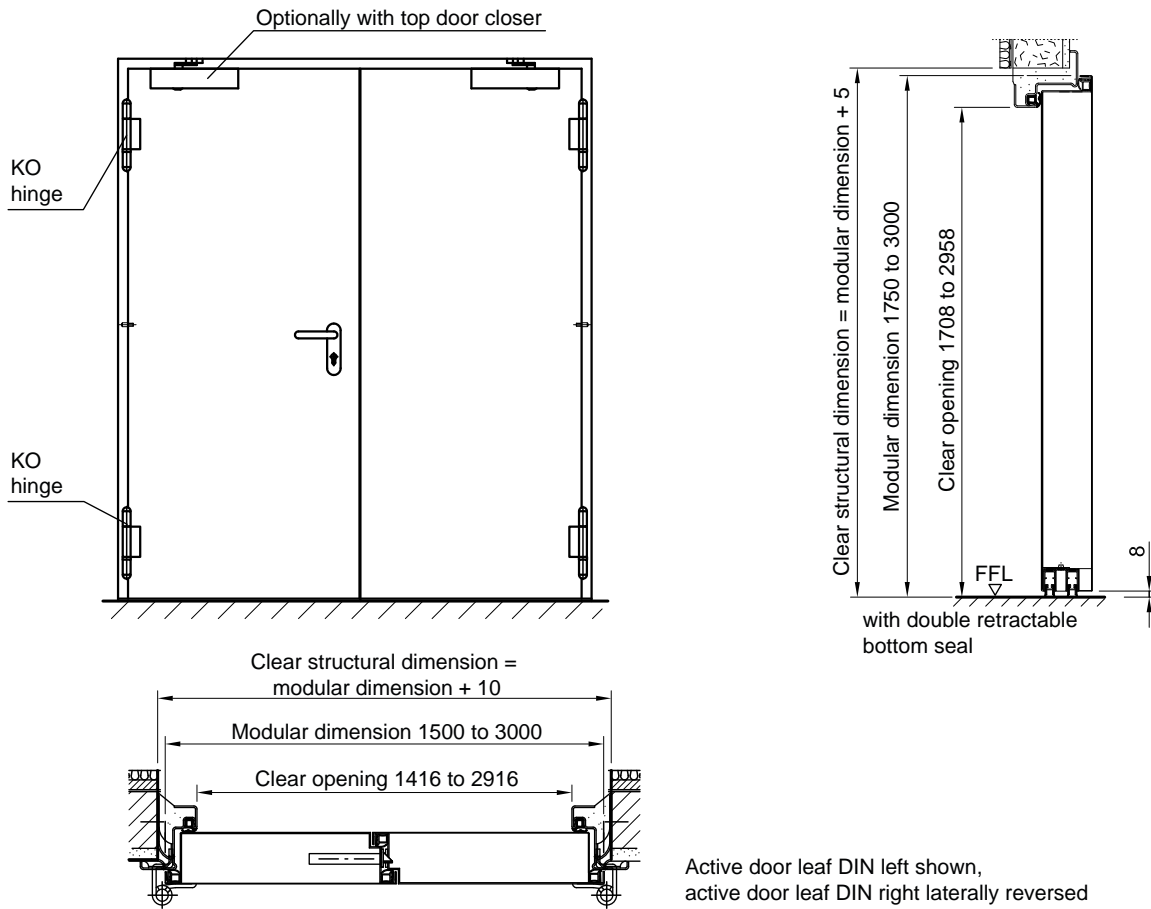
Active door leaf:

- Mortice lock with latch lever in acc. with DIN 18250, prepared for profile cylinder
 - FS round handle set, black (plastic). Handle pivoted on bearing, with tumbler insert (Bb) and 1 Bb key
- Inactive door leaf:
- With concealed door edge bolt

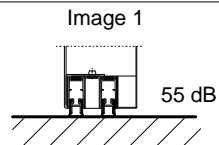
Special equipment:

- Handle sets / Lever/Knob sets:
 - plastic
 - light metal
 - stainless steel
 - with short plate or rose escutcheon (various makes)
- Locks:
 - profile cylinder 45.5 + 45.5 mm
- Top door closer DIN EN 1154
- Panic locks
- Panic bar handle

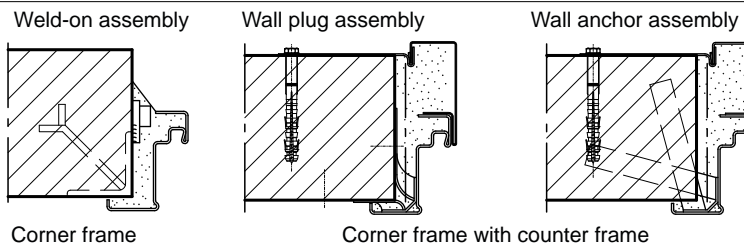
Sound-insulated steel door dw 67-2/HS „Teckentrup“ up to $R_w = 55$ dB



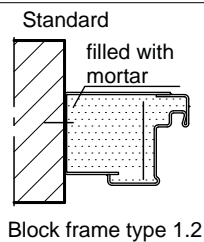
Floor connections:
Image 1: with double retractable bottom seal



**Installation in masonry/
concrete walls**
concrete walls
masonry walls



Installation with block frame
Flush installation between
concrete walls, masonry walls
dw 67-2/HS



**Installation in autoclaved
aerated concrete walls**

